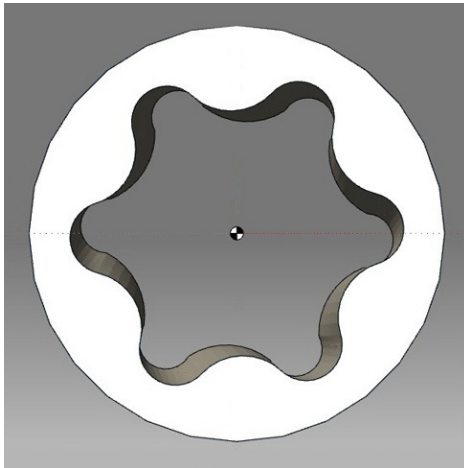


STYKFIT[®] 6

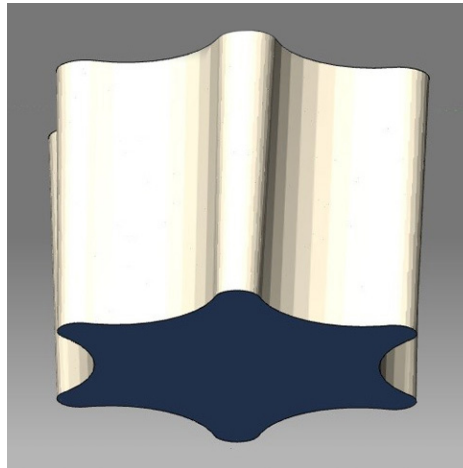
Premium, high-torque fasteners

Better
Than
Torx[®]



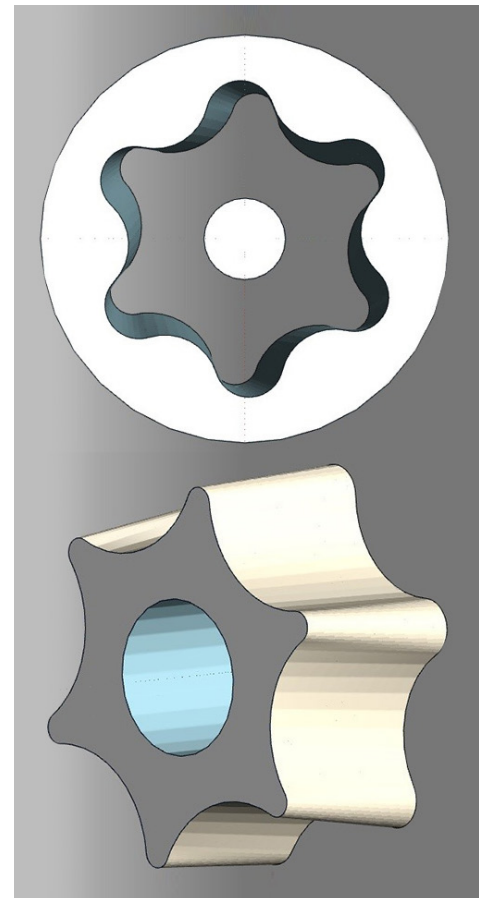
STYKFIT[®] 6 SCREW HEAD

Torx[®] and Bryce Fastener's STYKFIT[®] 6 are interchangeable. Pairing STYKFIT[®] 6 Driver Bit with STYKFIT[®] 6 Screw will give the best stick-fit, hold straight, and not strip out.



STYKFIT[®] 6 BIT TIP

The bit stick-fits into STYKFIT[®] 6 screws and most other six-lobe fasteners depending on their tolerances.



STYKFIT[®] 6 SECURITY SCREW & BIT TIP

STYKFIT[®] 6 can be made into a security screw and bit, and is a great replacement for Tam 6-Lobe[™].

The Difference — STYKFIT[®] 6 vs Torx[®]

STYKFIT[®] 6

- Twist-tapered walls push energy forward
- Bits grip at 360° with interference fit
- Torque is higher
- One-handed installation permits use with robots
- Tight bit-grip on screw helps align assembly pieces
- Bit breakage 70% less from 360° grip
- One specification needed for torque
- STYKFIT[®] 6 bits "stick-fit" into Torx[®]

Torx[®]

- Vertical sidewalls are neutral
- Undersized bits have localized contact & wobbly fit
- Torque is less
- Two-handed manual installation required
- Loose bit-fit makes alignment difficult
- Bit breakage is increased from localized contact
- Multiple punch depth specifications needed for torque
- Torx[®] bits fit better in STYKFIT[®] 6 than Torx[®]

Additional Benefits

1. Because the area of intersection between bit and screw is maximized, punch depths and head heights are lowered (*saving weight*).
2. Head heights on socket screws is reduced by almost 1/2.
3. Platings, coatings, heat treatments, and wear that affect screw dimensions, can be easily compensated for by slight adjustments in bit tip lengths.
4. Available in all sizes now used with Torx[®].

TORX[®] is a registered trademark of Acument Intellectual Properties, LLC

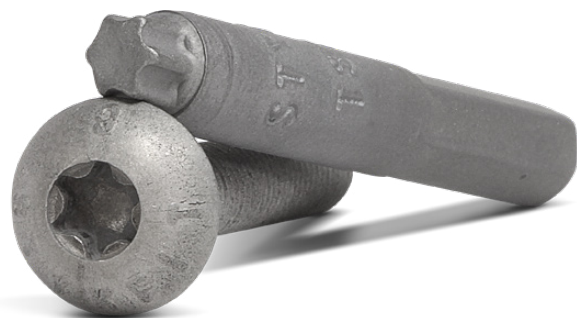


Made in USA
Engineered & Crafted
100% in the USA

PAT. NO. D769,690 S

STYKFIT[®] 6

Premium, high-torque fasteners



Basic Screw Diameter	Thread Pitch Course, Fine	Sheet Metal/ Plastic Threads	Lengths Available (INCH*)	Bit Size: Button, Flat + Pan, Truss, Oval	Engagement For Full Torque	Bit Size: Socket, Raptor BH, Raptor Flat	Engagement For Full Torque	Suggested Seating Torque Hardened Alloy Steel	Suggested Seating Torque Stainless Steel
.060	0-80	—	1/8-1/2"	—	—	T-5 (.055")	.030"	1 IN /LB	1 IN /LB
.073	1-72	—	1/8-1/2"	T-5 (.055")	.030"	T-6 (.066")	.035"	2 IN /LB	1.5 IN /LB
.086	2-56, 64	2-32	3/16-3/4"	T-6 (.066")	.035"	T-7 (.077")	.035"	3 IN /LB	2.5 IN /LB
.099	3-48, 56	3-28	3/16-1"	T-7 (.077")	.035"	T-8 (.090")	.035"	5 IN /LB	3.9 IN /LB
.112	4-40, 48	4-24	3/16-1 1/2"	T-8 (.090")	.035"	T-10 (.107")	.045"	8 IN /LB	5.2 IN /LB
.125	5-40, 44	5-20	1/4-1 1/2"	T-10 (.107")	.045"	T-10 (.107")	.045"	10 IN /LB	7.7 IN /LB
.138	6-32, 40	6-20	1/4-1 1/2"	T-10 (.107")	.045"	T-15 (.128")	.045"	16 IN /LB	9.6 IN /LB
.164	8-32, 36	8-18	1/4-3"	T-20 (.151")	.050"	T-20 (.151")	.050"	29 IN /LB	20 IN /LB
.190	10-24, 32	10-16	1/4-3 1/4"	T-25 (.173")	.060"	T-25 (.173")	.060"	42 IN /LB	31 IN /LB
.216	12-24, 28	12-14	1/4-3 1/4"	T-25 (.173")	.060"	T-27 (.195")	.065"	75 IN /LB	49 IN /LB
.250	1/4-20, 28	14-14	5/16-3 1/4"	T-27 (.195")	.065"	T-30 (.216")	.065"	99 IN /LB	75 IN /LB
.3125	5/16-18, 24	—	3/8-5 1/2"	T-40 (.260")	.100"	T-45 (.306")	.110"	17 FT /LB	11 FT /LB
.375	3/8-16, 24	—	5/8-5 1/2"	T-45 (.306")	.110"	T-50 (.346")	.115"	30 FT /LB	20 FT /LB
.4375	7/16-14, 20	—	5/8-5 1/2"	T-50 (.346")	.115"	T-50 (.346")	.115"	50 FT /LB	32 FT /LB
.50	1/2-13, 20	—	3/4-5 1/2"	T-55 (.440")	.150"	T-55 (.440")	.165"	73 FT /LB	43 FT /LB
.562	9/16-12, 18	—	7/8-5 1/2"	T-60 (.520")	.145"	T-60 (.520")	.145"	89 FT /LB	70 FT /LBS
.625	5/8-11, 18	—	1-5 1/2"	T-60 (.520")	.150"	T-60 (.520")	.150"	135 FT /LB	92 FT /LB
— METRIC WITH INCH TRANSLATION —									
.063"	M1.6 x 0.35	—	3-12mm	—	—	T-5 (.055")	.030"	.25Nm 1IN /LB	.2Nm 1IN /LB
.078"	M2 x .4	—	3-12mm	T-5 (.055")	.030"	T-6 (.066")	.035"	.33Nm 3IN /LB	.26Nm 2.3IN /LB
.098"	M2.5 x .45	—	4-20mm	T-7 (.077")	.035"	T-8 (.090")	.035"	.58Nm 5IN /LB	.44Nm 3.9IN /LB
.118"	M3 x .5	—	4-50mm	T-8 (.090")	.035"	T-10 (.107")	.045"	1.15Nm 10IN /LB	.8Nm 7IN /LB
.138"	M3.5 x 0.6	—	5-65mm	T-10 (.107")	.045"	T-15 (.128")	.045"	2.0Nm 15IN /LB	1.1Nm 10IN /LB
.157"	M4 x .7	—	6-75mm	T-20 (.151")	.050"	T-20 (.151")	.050"	2.7Nm 24IN /LB	2.15Nm 19IN /LB
.196"	M5 x .8	—	7-80mm	T-25 (.173")	.060"	T-25 (.173")	.060"	5.4Nm 48IN /LB	3.7Nm 33IN /LB
.236"	M6 x 1.0	—	7-80mm	T-25 (.173")	.060"	T-27 (.195")	.065"	9.15Nm 81IN /LB	7.31Nm 65IN /LB
.315"	M8 x 1.25	—	10-140mm	T-40 (.260")	.100"	T-45 (.306")	.110"	22.0Nm 16FT /LB	14.9Nm 11FT /LB
.394"	M10 x 1.5	—	12-140mm	T-45 (.306")	.110"	T-50 (.346")	.115"	44Nm 32FT /LB	30 Nm 22FT /LB
.472"	M12 x 1.75	—	16-140mm	T-55 (.440")	.150"	T-55 (.440")	.165"	77Nm 56FT /LB	57 Nm 42FT /LB
.551"	M14 x 1.5	—	20-140mm	T-60 (.520")	.145"	T-60 (.520")	.145"	122Nm 89FT /LB	96 Nm 70FT /LBS
.630"	M16 x 2.0	—	24-140mm	T-60 (.520")	.150"	T-60 (.520")	.150"	190Nm 140FT /LB	130 Nm 96FT /LB

PAT. NO. D769,690 S